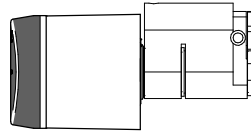
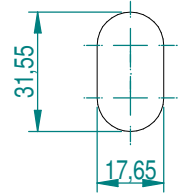


Durability EN 1303 Class 6 cylinder



A1

AUSTRALIAN OVAL
CILINDER



Eng **Installation** E **Instalacion** D **Montage** F **Installation**

<p>Knob Blocking screw</p> <p>CR2 Battery included</p>	<p>SP220764</p> <p>PH2</p>	<p>1</p>
<p>2</p> <p>CLICK!</p>	<p>3</p>	<p>4</p> <p>PAIRED!</p> <p>CLICK!</p> <p>*Important: the knob is uniquely paired to the cylinder, and will not work if you switch in a different SALTO knob.</p>
<p>5</p>	<p>6</p>	<p>7</p>

F **NE FERMEZ PAS LA PORTE. PROGRAMEZ LE CYLINDRE AVANT**

D **TÜRE NICHT SCHLIESSEN. ZUERST SCHLOSS PROGRAMMIEREN**

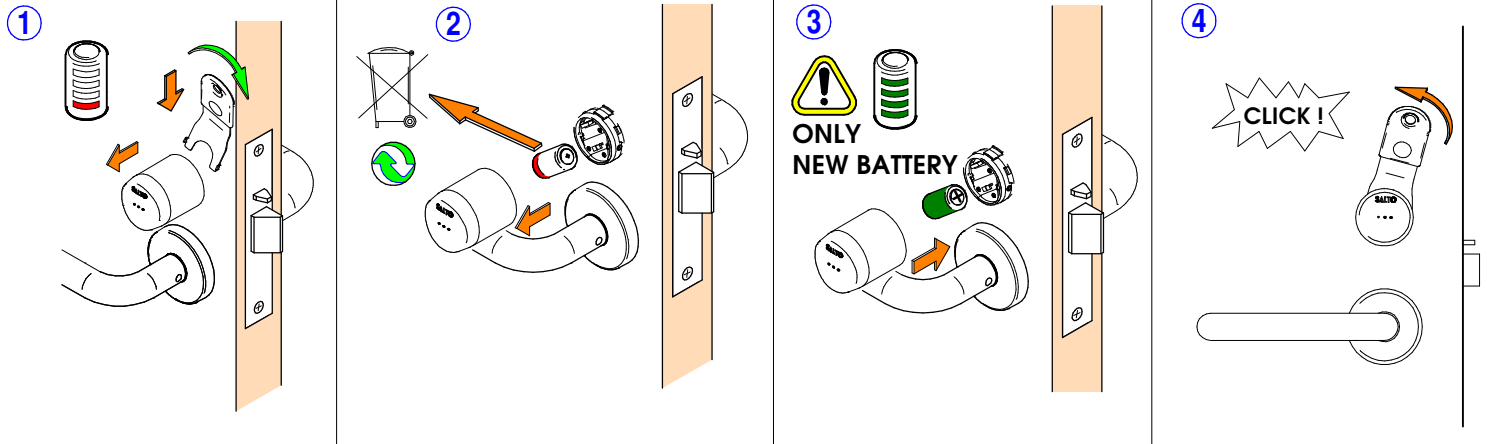
E **EN ESTE PUNTO NO CIERRE LA PUERTA, PROGRAME PRIMERO EL CILINDRO**

Eng **AT THIS POINT DO NOT CLOSE THE DOOR PROGRAM THE CYLINDER FIRST**



follow user manual

Eng Battery change **E Sustitucion de la pila** **D Batterie tauchen** **F Remplacer la pile**



Eng Installation and use recommendations **E Consejos instalación y uso**
D Empfohlene Handhabung und Installation **F Recommendations d'utilisation et d'installation**

