

Eng Installation guide Cam Lock Cylinder

E Guía de instalación Cilindro Cam Lock

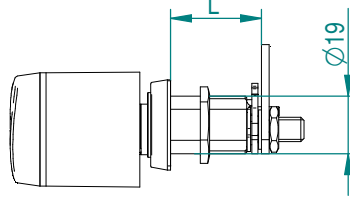
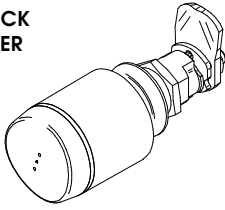
D Montageanleitung Cam Lock Cylinder

F Guide d'installation Cylindre Cam Lock

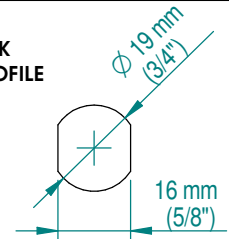
NL Installatiehandleiding Cam Lock Cylinder

G x CL 119M.. series
G x CL 119W..

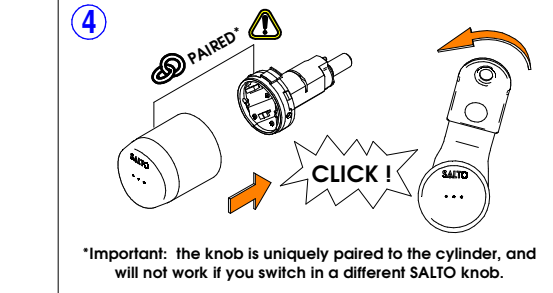
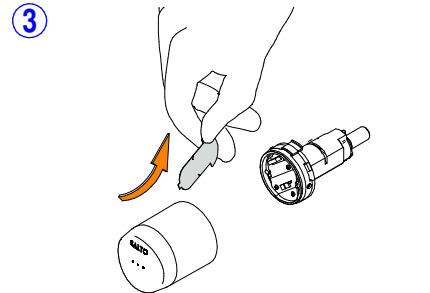
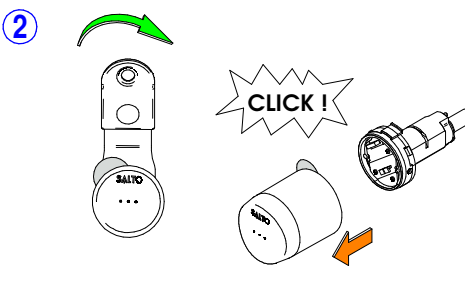
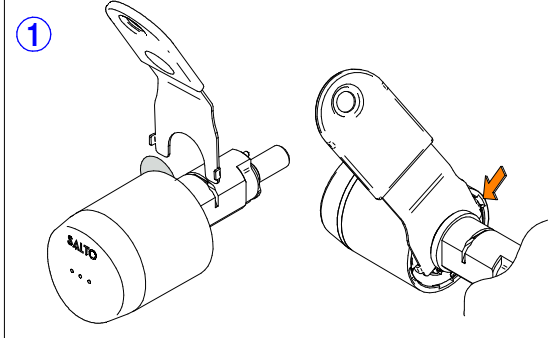
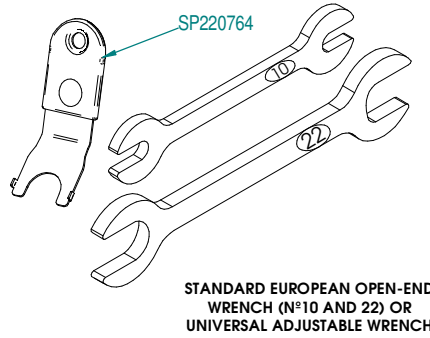
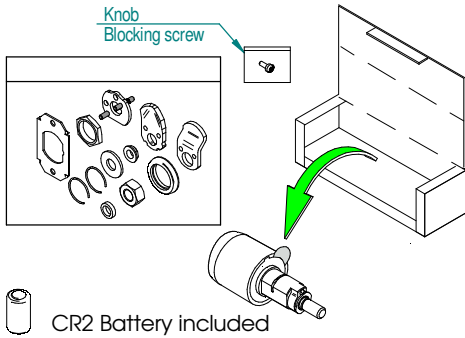
**CAM LOCK
CYLINDER**



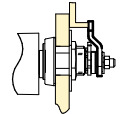
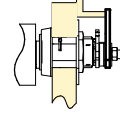
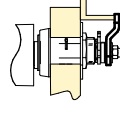

**CAM LOCK
CYLINDER PROFILE**



Eng Installation **E** Instalación **D** Installation **F** Installation **NL** Installatie

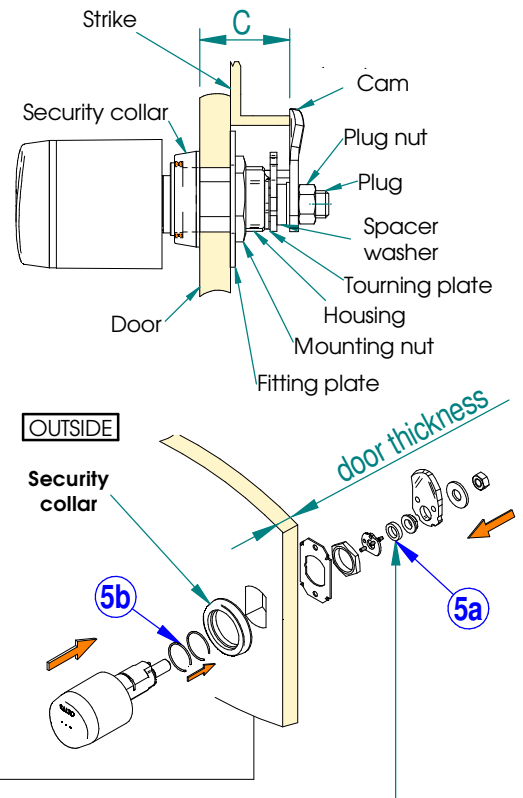


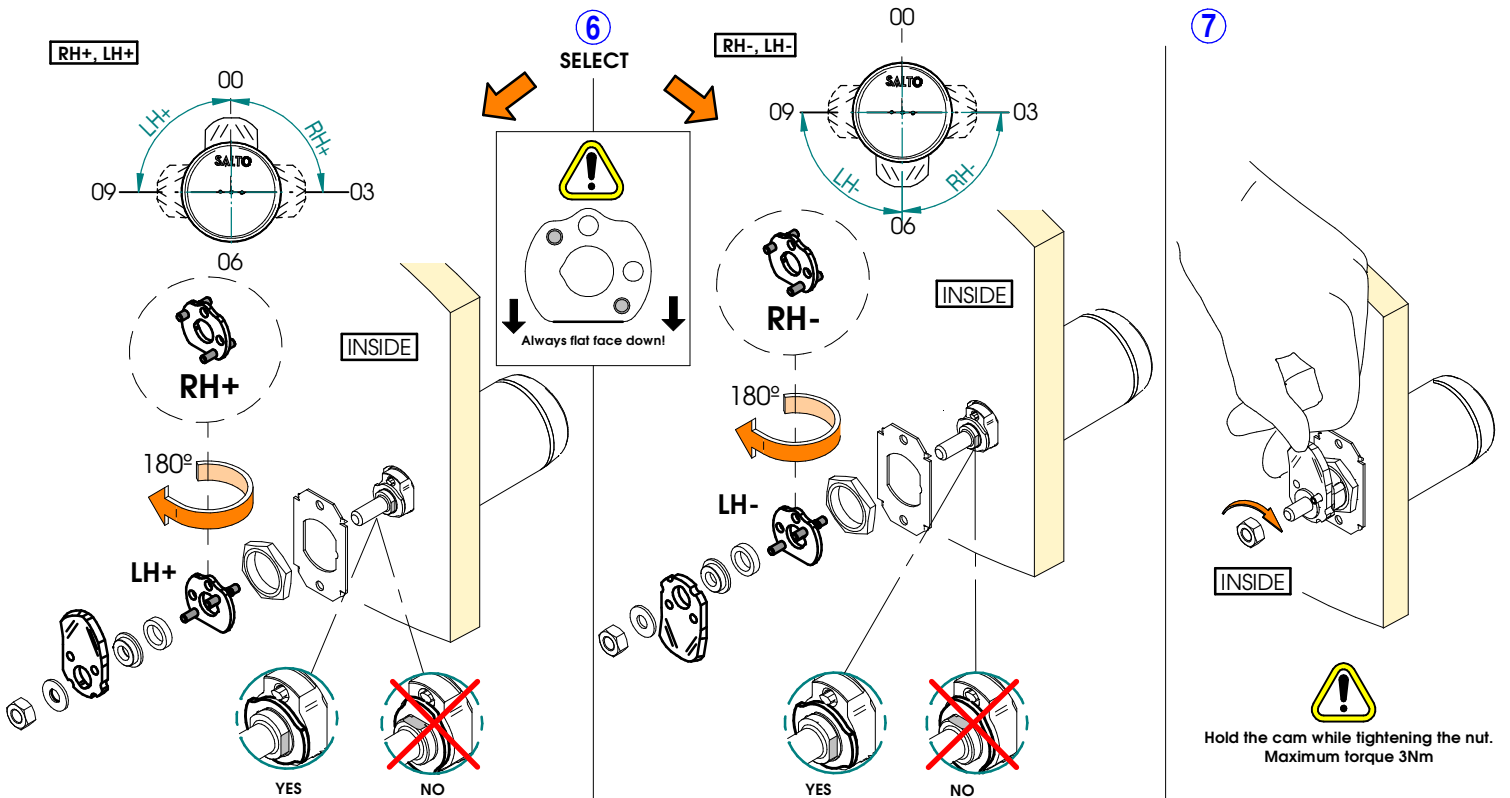
- 5** **Eng** Measure c distance ----> select cam type ----> select components 5a and 5b **E** Medir distancia c----> Seleccionar lengüeta ----> seleccionar componentes 5a y 5b
D Gemessene Entfernung c----> Auswahl des Hebels----> Auswahl der Komponenten 5a und 5b **F** Mesurer la distance c----> Sélection cam ----> Sélectionner les composants 5a et 5b
NL Meet afstand L----> Selecteer lip ----> Selecteer componenten 5a en 5b.

"C" Door-strike distance				Cam Type and position	Number of spacer washers	Number spacer rings
GxCL119M...		GxCL119W...				
22 to 23mm	57/64"	29 to 30mm	1 - 5/32"		5a	5b
23 to 24mm	59/64"	30 to 31mm	1 - 13/64"		-	2
24 to 25mm	31/32"	31 to 32mm	1 - 15/64"		-	1
25 to 26mm	1"	32 to 33mm	1 - 9/32"		-	-
26 to 27mm	1 - 3/64"	33 to 34mm	1 - 5/16"		1	2
27 to 28mm	1 - 5/64"	34 to 35mm	1 - 23/64"		1	1
28 to 29mm	1 - 1/8"	35 to 36mm	1 - 25/64"		-	2
29 to 30mm	1 - 5/32"	36 to 37mm	1 - 7/16"		-	1
30 to 31mm	1 - 13/64"	37 to 38mm	1 - 15/32"		-	-
31 to 32mm	1 - 15/64"	38 to 39mm	1 - 33/64"		1	2
32 to 33mm	1 - 9/32"	39 to 40mm	1 - 19/32"		1	1
33 to 34mm	1 - 5/16"	40 to 41mm	1 - 5/16"		1	-
34 to 35mm	1 - 23/64"	41 to 42mm	1 - 41/64"		-	2
35 to 36mm	1 - 25/64"	42 to 43mm	1 - 43/64"		-	1
36 to 37mm	1 - 7/16"	43 to 44mm	1 - 23/32"		-	-
37 to 38mm	1 - 15/32"	44 to 45mm	1 - 3/4"		1	2
38 to 39mm	1 - 33/64"	45 to 46mm	1 - 51/64"		1	1
39 to 40mm	1 - 19/32"	46 to 47mm	1 - 53/64"		1	-

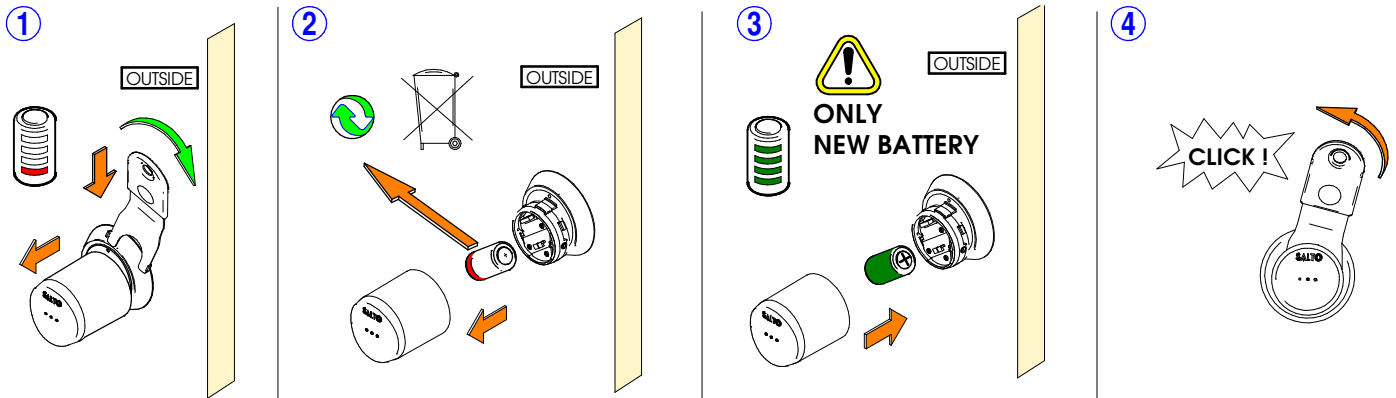
Door thicknesses
1 ≤ t < 15 mm
Normally metal
doors

Door thicknesses
15 ≤ t ≤ 22 mm
Normally wooden
doors

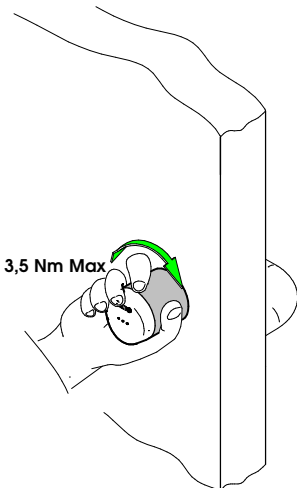




(Eng) Battery change **(E)** Sustitución de la pila **(D)** Batterie tauschen **(F)** Remplacer la pile **(NL)** Vervangen batterij



(Eng) Installation and use recommendation **(E)** Consejos instalación y uso **(D)** Empfohlene Handhabung und Installation **(F)** Recommendations d'utilisation et d'installation **(NL)** Installatie en gebruikstips



- (Eng) Important Note:**
Do not hit or bang the cylinder. If needed, loosen the screws supporting the mortise to help fit everything into place.
Keep the cylinder away from paint, acids and oil.
- (E) Nota importante:**
En el montaje del Cilindro no lo golpee, si es necesario afloje la fijación de los herrajes.
No ponga el Cilindro en contacto con aceite, pintura o ácido.
- (D) Wichtiger Hinweis:**
Den Zylinder mit Gewalt (Hauen/Schlagen) einbauen, bei Bedarf lösen Sie die Schrauben vom Einsteckslot oder Beschlag um mehr Luft zum Einbau zu haben.
Der Zylinder darf nicht mit Farbe, Säure oder Ölen in Kontakt kommen.
- (F) Note importante:**
Lors du montage du cylindre ne pas le frapper, si nécessaire, desserrer la fixation de l'ensemble plaque-béquille.
Ne pas mettre le cylindre en contact avec de l'huile, de la peinture ou des acides.
- (NL) Belangrijke opmerking:**
Niet slaan of tikken op de cilinder. Indien nodig, kunt u de schroeven losdraaien die het insteekslot en de rozetten vastzetten om de cilinder soepel te kunnen plaatsen.
Cilinder niet in contact laten komen met verf, zure of olie.

